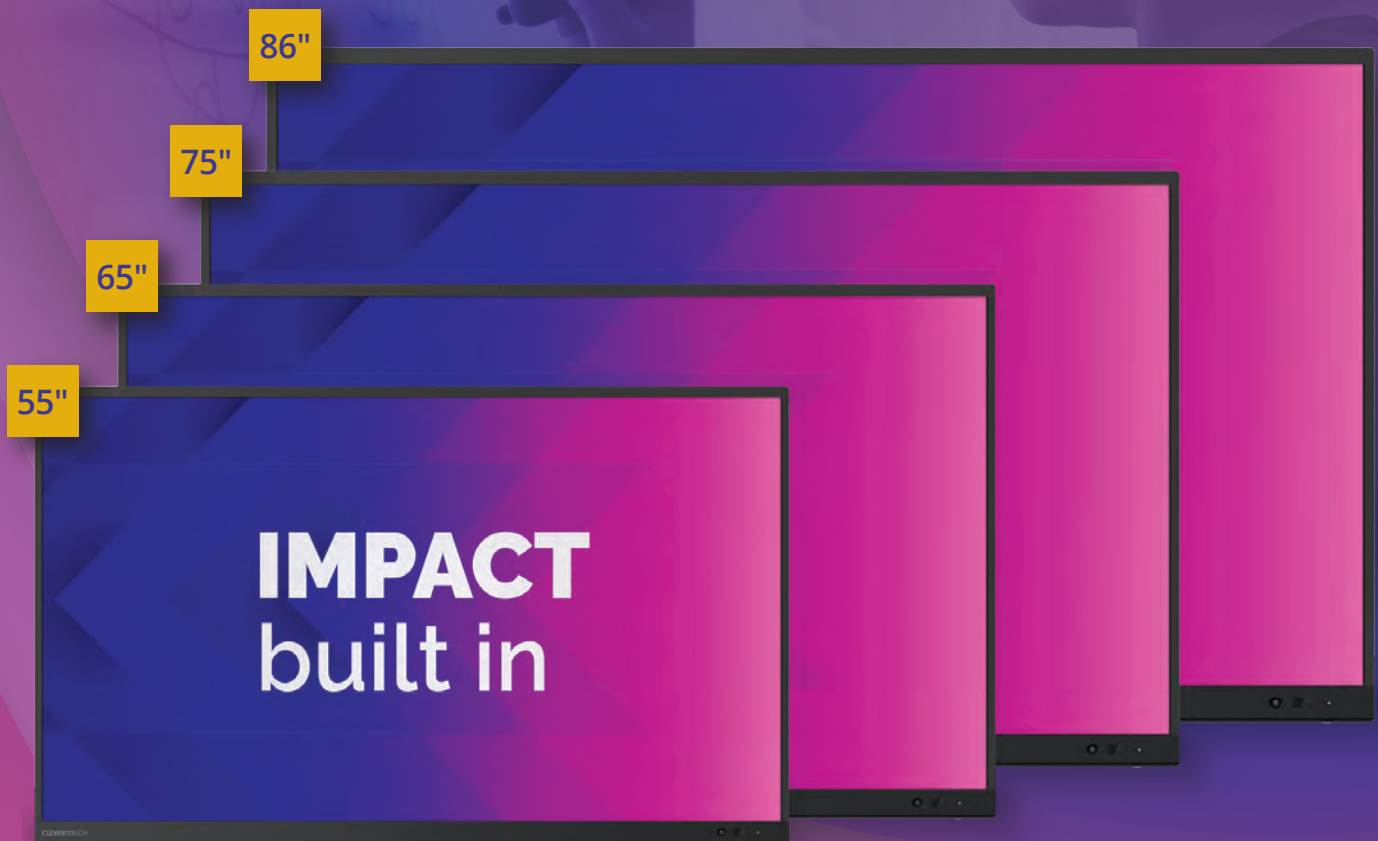


CLEVERTOUCH®



IMPACT™ Series



Interactive Display Technology of the Year
AV Awards
2019 - Winner



Interactive Product of the Year
AV Awards
2017 - Winner



Digital Devices
BETT Awards
2019 - Finalist



Collaboration Product of the Year
AV News Awards
2018 - Winner



Tech & Learning Best of Show
Tech and Learning
2019 - Winner



Tech & Learning Best of Show
Tech and Learning
2018 - Winner

IMPACT™ Plus NEW

55" 4K

65" 4K

75" 4K

86" 4K

IMPACT™ Plus – Our most powerful and feature rich education 4K touchscreen that we've developed is designed for the classroom.

NEW

Super Wide Sound

45W Max Power for room-filling sound.

NEW

Microphone

Built-in line array microphone.

NEW

4K

True 4K resolution and sharper user experience throughout

NEW

Clever Account Profile with NFC

With an NFC sensor built into the bezel, just tap your NFC card on the bottom of the screen to instantly log in to your profile.

NEW

High Precision Technology

Our patented Super Glide Touch technology offers the most fluid writing experience on a touchscreen. It's as smooth as writing on a whiteboard – with no lag. With the ability to differentiate between palm-erase, fingertouch, and stylus-writing, there's no need to change settings mid-flow.

New super cool stylus

Comfort stylus to aid teaching

NEW

Comprehensive Warranty

No ongoing subscriptions charges.

Security Matters

We know how important it is to be secure, so we've got lots of options for you to keep control of your device. Clevertouch can run on-or-off the network. Settings, apps and Android can all be disabled. Data can be wiped at the end of a session and the screen can be locked with a secure passcode.

Infinity Whiteboarding

Never run out of space with our infinite canvas. With numeracy tools, handwriting-to-text recognition, and the ability to insert images and shapes, all of which can be saved, printed, or shared to student devices.

Cloud Accounts

Sync with your Cloud accounts so that you can work anywhere at any time.

 Google Drive

 OneDrive

 Dropbox

NEW

Connectivity

Huge connectivity including two of the latest USB-C ports. Allows single cable connection for audio, video and touch. One USB-C gives the ability to charge your device while also casting to the main display.

NEW

Environmentally Friendly Motion Detection

Equipped with Proximity Sensors your Clevertouch will power off when no one is detected in the room.

Cleverstore

Access hundreds of free teaching apps to make lessons more engaging.

How IMPACT™ works for your school



Save time lesson planning with subscription free software



Apps for Blended Learning



Screen mirroring with built-in teacher controls



Making integration and installation easier



High Precision Technology



Send messages, alerts and media to all of your Clevertouch screens remotely.

Quick Launch Menu for instant teaching tools

Your most commonly used apps are available with one touch and are easily accessible via the Quick Launch Menu.

Annotation tools can be accessed at any time, keeping lesson flow smooth and simple, ensuring increased student engagement.

The Clevershare App is free to download and compatible with Android, Windows, iOS and Chrome devices. Up to 50 devices can connect with the Clevertouch screen and share content – images, video, and audio. The presenter has full control over what is shared, and can show up to 4 device screens simultaneously, increasing student collaboration and participation within every lesson. Now includes touch-back.

Make notes, diagrams or images, add and scroll through multiple pages, insert an image or change the background colour. Now includes handwriting and formula recognition.

Double click on files to open them, as well as easily copy, cut and paste, so it's just like using a PC. Personal Cloud Storage integration.

Explore the internet without needing a computer, using the IMPACT™, Chrome and Chromium browsers.

Cleverstore contains hundreds of apps in all subjects and a range of languages, including literacy, STEAM and languages. Each app is tested by our team, to make sure no adverts, in app purchases, or inappropriate content gets through. We've partnered with the most popular educational app developers to give you apps that you can really make use of in the classroom.

Easily go back to recently used apps using the Active button with split screen mode.

Protect your Clevertouch with a password by using Lock.

All of the integrated apps and the apps you've downloaded from the Cleverstore can be found here.

All your favourite apps in one place, including Settings.

Floating annotation tool - Annotation, voting, spotlight, handwriting, timer, stopwatch, snipping and zoom tools.



All included in panel pricing, and no on-going costs

CleverMessage™

EXCLUSIVE TO
CLEVERTOUCH

With CleverMessage™ your Clevertouch isn't just a screen for teaching, it's also a communications tool. Use it to broadcast messages, alerts and important information to students, staff and visitors.

It's so easy and free to use!

- 1** Create an online account and connect your Clevertouch screens.
- 2** Add your logo, school colours, images, YouTube channel, videos, posters and more.
- 3** Choose your template and schedule your alerts.

Flexible Messaging Solutions



Daily news and activities



Weekly lunch menu



Live video messages from the school office



Emergency announcements and fire drills

— DO IT —
your way
Seamless integration



Flexible IT Computing Solutions

Upgrade to a Windows 10 Pro state-of-the-art latest Intel® OPS module.



From height adjustable mobile trolleys to wall mounts, we have a variety of solutions available to make your installation complete.

clevertouch.com/accessories

CLEVERSTORE®

Download your favourite Apps or search our FREE to use Cleverstore.

Google for Education



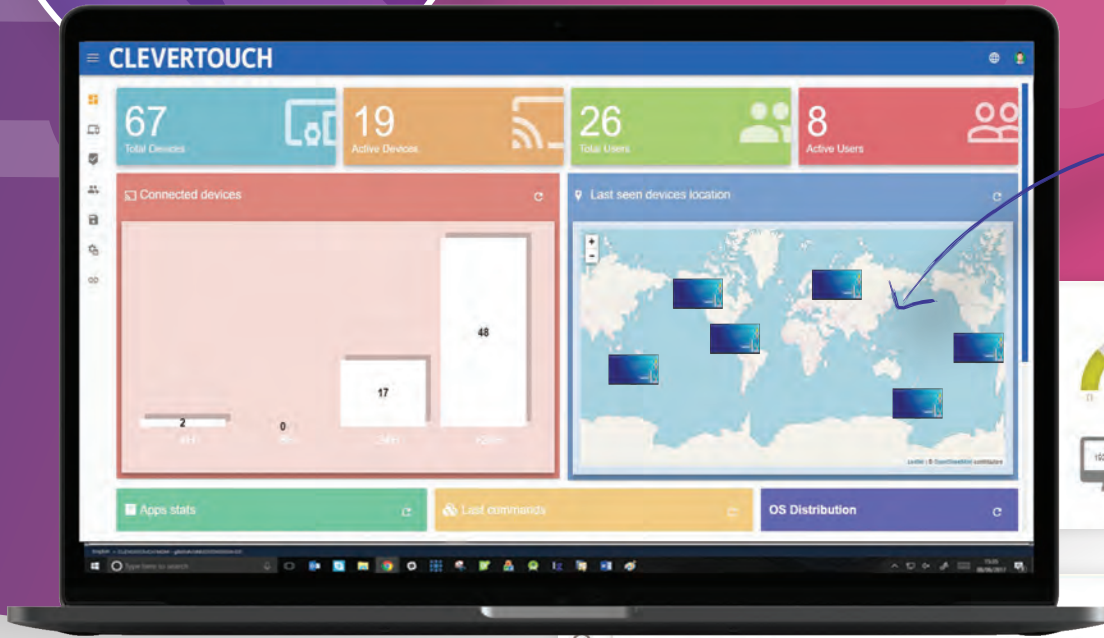
Using a Certified by Google Chromebox you can access the easy-to-use Google Classroom interface, allowing you to quickly create, save and share content.

All included in panel pricing, and no on-going costs

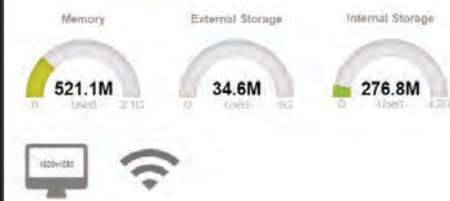
MDM & OTA functionalities mean you can control multiple Clevertouch devices, wherever they are!

Remote Management

IT departments and school administrators can take control with our MDM and OTA functionalities. No need to visit each classroom to upgrade or troubleshoot, now it can all be done remotely.



An overview of all your Clevertouch Displays



Update or Remove apps

View status information

View the Clevertouch screen

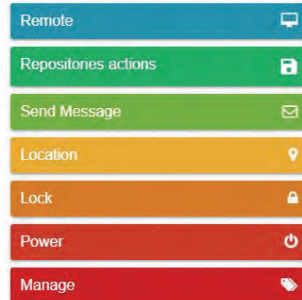
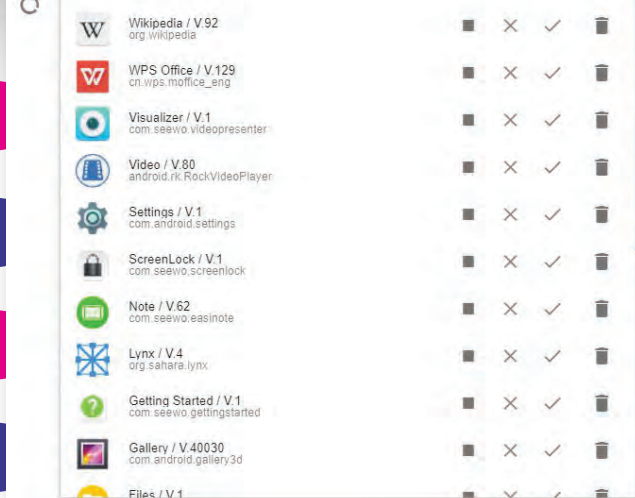
Install apps and files

Push messages to the Clevertouch

Lock and unlock a Clevertouch

Restart or Shutdown your Clevertouch

Add tags so you can group your Clevertouch fleet



View Individual Clevertouch Screens, update apps settings and more!

Instant Over-the-Air Updates (OTA)

The new Over-the-Air technology means that new features, bug fixes, software and hardware updates can be seamlessly delivered to every Clevertouch screen. With just the click of a button the Clevertouch screen will search for the latest

firmware update and install it, giving you instant access to the latest apps and features. Patch fixes no longer have to be downloaded onto a USB and uploaded manually, giving IT Managers more time and less hassle.

Display

Diagonal Size	55" 4K, 65" 4K, 75" 4K, 86" 4K
Screen Type	TFT LCD - Direct LED Backlight
Aspect Ratio	16:9
Display Colours	1.07 Billion (10 bit)
Resolution	4K UHD (3840x2160 @60Hz)
Response Time	8ms
Refresh Rate	60Hz
LCD Viewing Angle	178°
Brightness	400 cd/m ²
Contrast Ratio	55" 1200:1
	65" 1200:1
	75" 1200:1
	86" 1200:1
Dynamic Contrast Ratio	55" 5000:1
	65" 5000:1
	75" 5000:1
	86" 5000:1
Glass Hardness	Tempered Glass - Mohs Level 7
Glass Type	Heat tempered - Anti Glare - Super Glide Surface
Main Board	V811

Interactivity

Writing Technology	High Precision Technology
Continuous Touch Points	20
Touch Resolution	32768x32768px
Response Time	< 8ms
Touch Accuracy	1.5mm
Minimum Object Size	3mm
Touch Tool	Finger, Gesture & Pen
Simultaneous Writing	Yes
Ink In Tools	Yes - LYNX
Pens Included	2 with different colour assignment to each end
Pen Type	Dual Recognition Stylus
Pen Holder	Integrated Full-length Pen Tray
Pen Tip Diameter	3mm/7mm
Pen & Touch Differentiation	Yes
Pen Identities	2
Palm Rejection	Yes
Annotation Over Any Source	Yes
Classroom Essential Apps	Includes Whiteboard, Annotate, Timer, Media Players, Browser, PDF Reader, Screen Record, Spinner, Voting, Maths Tools
Compatibility	Windows 7 to 10, Windows XP, Linux, Mac, Android, Chrome
Tracking Rate	6m/s
Scan Rate	200Hz
Gestures & Edge Swipes	Windows Supported

Connectivity

OPS Slot	1 - Intel® spec
HDMI In	3
HDMI Out	1
USB-A 2.0	3 (1 for system upgrade)
USB Touch (type B)	3
USB A 3.0 (faster data transfer)	3
USB C	2 (One supports charging any device)
LAN In (RJ45)	1 GB
RS-232	Yes
Wake-on-Lan	Yes
Clevertouch Wireless Adapter 2.0	Yes
Bluetooth	Yes
Displayport In	1
VGA In	1
VGA Audio In	1
Optical Out	1
Headphone	1
Touch Out	3
NFC Reader / Writer	Yes
Camera	Optional extra
Proximity Sensor	Yes

Computing

Operating System	Android Oreo 8
System Version	LUX 8
RAM	4GB
Internal Storage	32GB
CPU	Dual Core A73+Dual Core A53
GPU	Quad Core Mali G51
Android Resolution	4K
Android Module Slot	Yes
Integrated LUX UI	Yes

Audio

Dual Front Facing, Bass Enhanced Speakers	2 x 15 Watt Speakers + 15 Watt Subwoofer
Audio Out	Yes
SPDIF / Fibre	Yes
Sound Channel	2.1
Line Array Microphone	Yes
Super Wide Sound	Yes

Operating & Storage Environment

Operating Temperature	0° to 40°
Storage Temperature	-20° to 60°
Operating Humidity	10% to 90% RH
Storage Humidity	10% to 90% RH
Altitude	Below 5000 metres

Physical Specifications

Panel Dimensions	55" 1268x792x90mm
	65" 1489x919x91mm
	75" 1709.7x1042.4x94.8mm
	86" 1957.2x1181.9x94.8mm
Packed Dimensions	55" 1428x220x878mm
	65" 1697x220x1038mm
	75" 1875x280x1208mm
	86" 2146x280x1326mm
Net Weight	55" 31.25Kg
	65" 43.95Kg
	75" 56.73Kg
	86" 73.45Kg
Packed Weight	55" 38.55Kg
	65" 53.95Kg
	75" 75.75Kg
	86" 95.30Kg
VESA Mount Point	55" 400x200mm
	65" 600x400mm
	75" 800x400mm
	86" 800x600mm

Comprehensive Warranty

Warranty term and upgrade options vary by region. Contact your local reseller or distributor for information and visit www.clevertouch.com/about/warranty

Compliance & Certification

Regulatory Certification CE, FCC, UL, Energy Star & EEC



	IMPACT™ Plus Built in Features
Sizes	55" 4K, 65" 4K, 75" 4K, 86" 4K
RAM	4GB RAM
Internal Storage	32GB
4K UHD (3840x2160 @60Hz)	Yes
Tempered Glass - Mohs Level 7	Yes
High Precision Technology	Yes
20 Continuous Touch Points	Yes
Finger, Gesture & Pen	Yes
Simultaneous Writing	Yes
Ink-In Tools Via LYNX	Yes
Dual Recognition Stylus	Yes
Palm Rejection	Yes
Annotate Over Any Source	Yes
Classroom Essential Apps: Includes Whiteboard, Annotate, Timer, Media Players, Browser, Pdf Reader, Screen Record, Spinner, Voting, Maths Tools	Yes
Compatible With Windows 7 To 10, Windows XP, Linux, Mac, Android, Chrome	Yes
LUX 8 Powered By Android Oreo 8	Yes
2 X 15 Watt Speakers	Yes
Ops Intel Pc Slot	Yes
Great Connectivity	Yes
V811 Chipset	Yes
Motion Sensor	Yes
Array Mic	Yes
Usb-C x2 With One Charging Ability	Yes
Integrated NFC	Yes
Clevershare Hardware Integrated	Yes
Super Wide Sound Subwoofer	Yes
True 4K User Interface	Yes
Super Cool Stylus	Yes
Android Module Upgrade Slot	Yes
Display Port x1	Yes

© 2019 Clevertouch. All rights reserved. Sahara Presentations Systems PLC. is the owner of a number of trademarks in several jurisdictions across the world including but not limited to Clevertouch, the Clevertouch logo, UX Pro, IMPACT™, IMPACT™ Plus, LUX, Lynx, CleverMessage, Cleverstore and Clevershare. All third-party trademarks (including logos and icons) referenced by Clevertouch remain the property of their respective owners. Unless specifically identified as such, Clevertouch's use of third-party trademarks does not indicate any relationship, sponsorship, or endorsement between Clevertouch and the owners of these trademarks. Applicable Terms and Conditions for warranty and support available at clevertouch.com/about/warranty. All weights and dimensions are approximate. Product specifications are subject to change without notice. Clevertouch.com.

Our Displays are simply **Award-winning**

2019

AV Awards

Interactive Display Technology of the Year

Keiba

Technology Business of the Year

Infocomm

Best of Show - Tech & Learning

Infocomm

Best of Show - AV Technology

InAVation Awards

Technology for Collaboration & Conferencing

AV News Awards

AV Display Innovation of the Year

Bett Awards

Finalist

2018

AV News Awards Awards

Collaboration product of the year

InAVation Awards

Collaboration product of the year

AV Awards

Finalist

Best of Show

Tech & Learning

Bett Awards

Finalist

2017 & 2016

AV Awards

Interactive product of the year

2016

AV Awards

Interactive product of the year

2015

AV Awards

Manufacturer of the Year



INAVATION AWARDS
TECHNOLOGY WINNER 2019

INAVATION AWARDS
TECHNOLOGY WINNER 2018